



Luxury Motor Yachts



Sport Fishing



Military/Patrol



SST
SYSTEM BY BENNETT

The ultimate in
brawn & beauty

A complete trim tab system for motor yachts that looks as good as it performs

Your customers wanted more. We delivered.

After 50 years of producing the world's most reliable trim tab system for day cruisers and trailered boats, Bennett Marine has now assembled a **comprehensive trimming system** to meet the demands of the 16m (50 ft) to 38m (120 ft) motor yacht market.

Unmatched durability for demanding applications.

The SST System is made for Luxury Motor Yachts, Military/Patrol and Sport Fishing vessels that face the most challenging conditions on the water. Solid stainless steel actuators secure the tabs in position.

Easy installation.

The SST System can easily be retrofitted to existing vessels, and all wire lengths are customized to the yacht's specifications. The result is a hassle-free, efficient installation.

Sophisticated accessories — Easy PLUG-and-PLAY installation

Electronic Indicator Control (EIC)

Three features combined into one compact, flush-mounted keypad.



Highly accurate indication

Bennett has developed the only technology that allows for truly accurate trim tab indication. Features variable intensity LEDs for night or daylight.

Convenient auto tab retraction

Bennett's patented Auto Tab Retractor (ATR) automatically retracts the tabs when the vessel's ignition is turned off.

Precise manual control

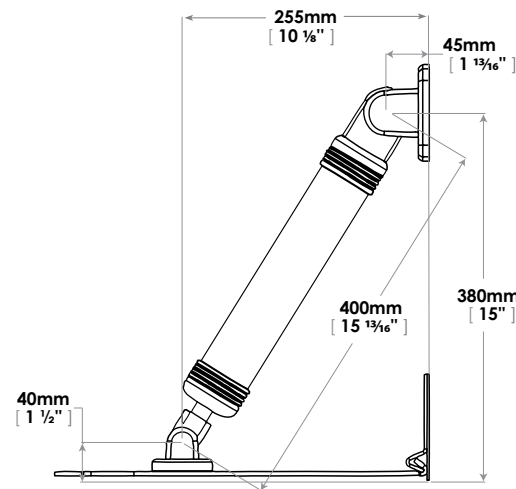
Bennett's popular rocker switch that is ergonomically designed and water resistant.

Optional Auto Tab Control (ATC)

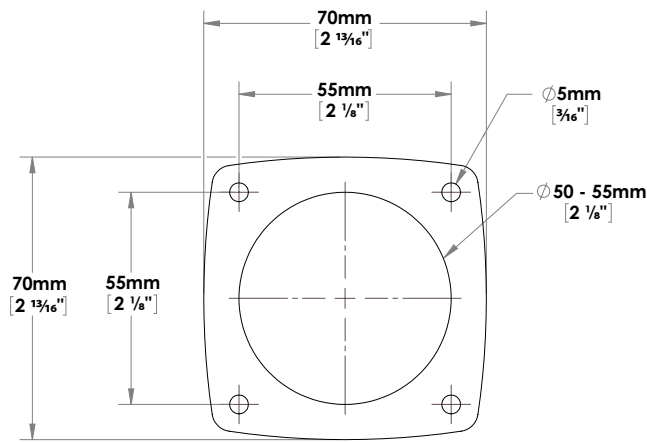
Winner of the coveted Innovation of the Year Award from the National Marine Manufacturer's Association



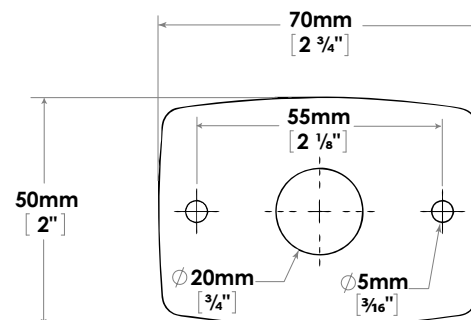
The Auto Tab Control is another innovative product that easily connects with the SST System. The ATC plugs directly into the EIC Relay Module, interacting with the SST System to automatically monitor and maintain the optimum cruising attitude.



Standard Actuator Position



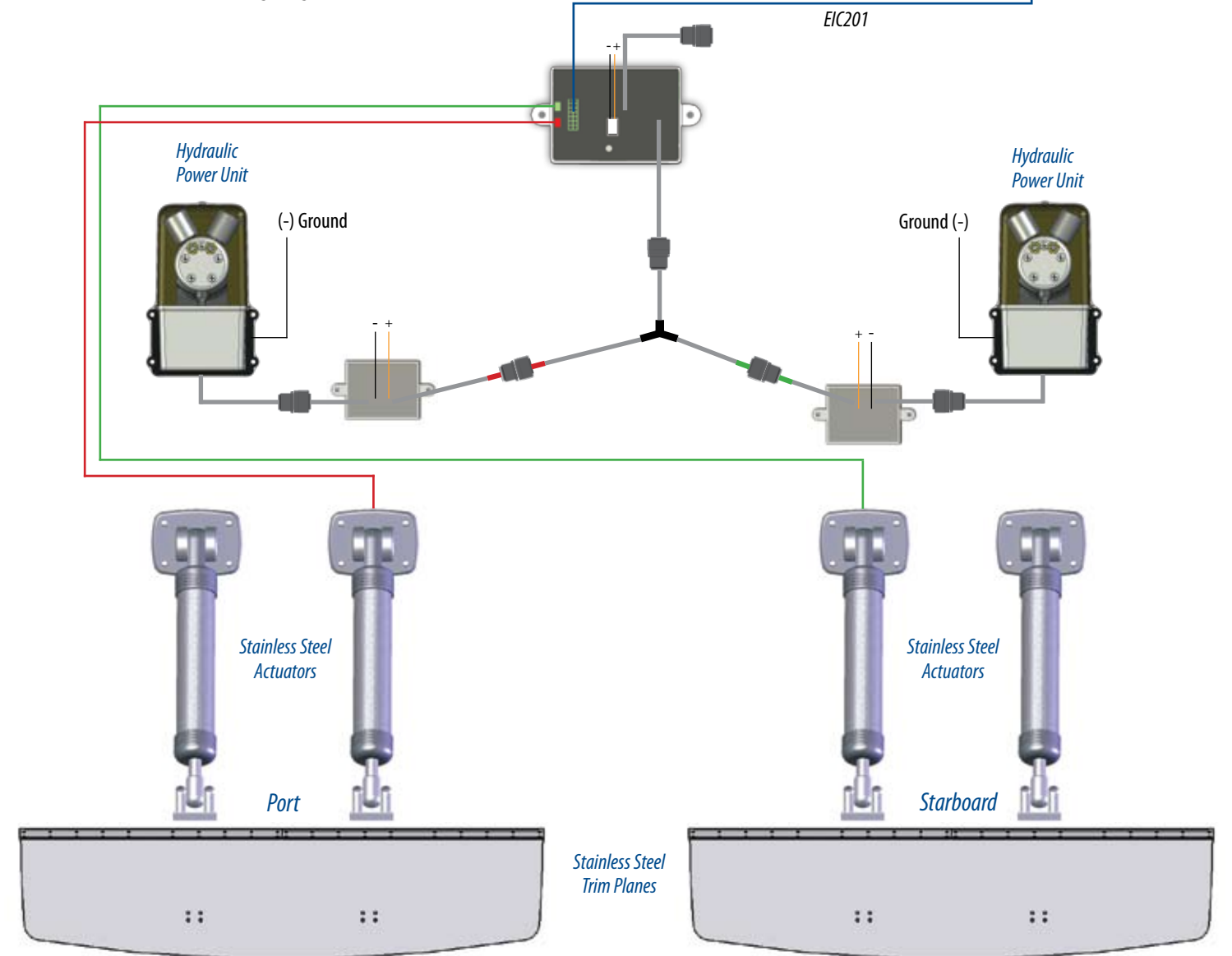
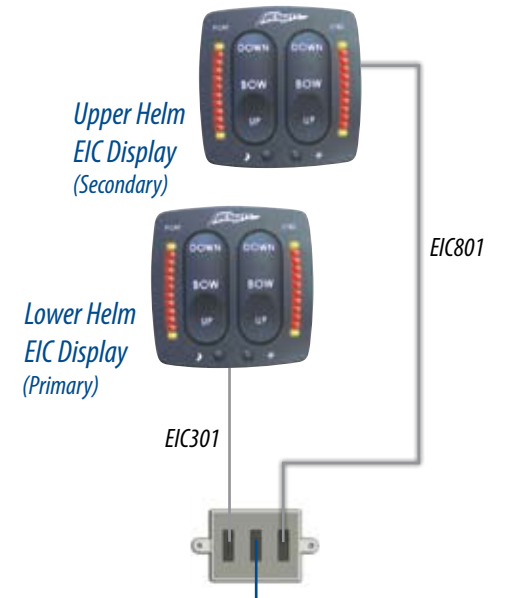
EIC Display



ATC Keypad

Included with all SST Systems:

- **Electronic Indicator Control**, with internal sensors — no wires or cables are exposed to the harsh marine environment
- **Auto Tab Retractor**, automatically retracts the tabs to the full-up position when ignition is turned off, minimizing marine growth on the actuator shafts
- **Two Compact Dual Acting Hydraulic Power Units**, each producing about 1,100 kg (2,400 pounds) of force through two actuators
- **Solid Stainless Steel Actuators, Dual Acting** (with no external hoses); precision machined; single or dual cylinder; 75 mm (3-inch) stroke; no dissimilar metals to cause electrolysis
- **7-gauge (4.7 mm), Stainless Steel, Heavy Duty Trim Tabs**, with an exclusive interlocking hinge



Your customers want more from a trim tab system



Durability and performance.

Form definitely meets function when the highest quality materials combine with the power of hydraulics — the preferred technology in demanding applications. Properly bonded, the SST System provides years of reliable and trouble-free trim tab control.

Innovative accessories.

The EIC and ATC feature an easy plug-and-play installation with no exposed delicate components.

Style and sophistication.

Bennett's unique design for the Stainless Steel Actuator exhibits both the elegance and strength that a motor yacht demands.

Worldwide customer support and availability.

Bennett provides worldwide distribution in over 60 countries. Your owner will have access to a network of support and parts for the SST System.



All from a name you can trust.

The SST System by Bennett is the result of more than 50 years of experience and over 1 million trim tab systems produced. No other company knows more about designing durable trim tab systems that are unmatched in strength and reliability — and will meet the demands of motor yacht owners.



Give your customers more of what they want — the SST System by Bennett.

Call +1.954.427.1400 or e-mail SSTSales@BennettTrimTabs.com today for a customized quotation.

SST
SYSTEM BY BENNETT

BENNETT
Marine